

Certificate US05/65586.00

The management system of

**MIM Software Inc. also trading as
MIM Software Brussels BVBA,
MIM Software Beijing Co., Ltd
and MIM Software**

25800 Science Park Drive, Suite 180,
Cleveland, OH, 44122, United States

has been assessed and certified as meeting the requirements of

**ISO 13485:2016
EN ISO 13485:2016**

For the following activities

The scope of registration appears on page 2 of this certificate.

This certificate is valid from 27 February 2020 until 02 April 2022
and remains valid subject to satisfactory surveillance audits.

Re certification audit due before 27 July 2021

Issue 14. Certified since 07 July 2005

Multiple certificates have been issued for this scope

The main certificate is numbered US05/65586.00

This is a multi-site certification.

Additional site details are listed on the subsequent page.

Authorised by

SGS United Kingdom Ltd
Rossmore Business Park Ellesmere Port Cheshire CH65 3EN UK
t +44 (0)151 350-6666 f +44 (0)151 350-6600 www.sgs.com

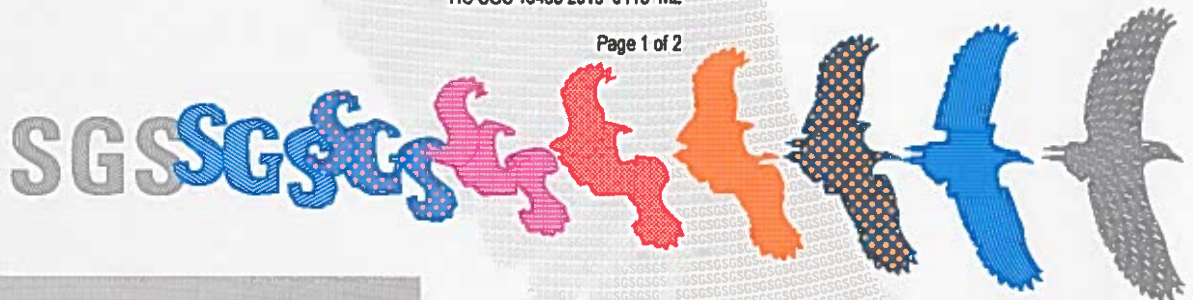
HC SGS 13485 2016 0118 M2

Page 1 of 2

SGS



0005



This document is issued by the Company subject to its General Conditions of Certification Services accessible at www.sgs.com/terms_and_conditions.htm. Attention is drawn to the limitations of liability, indemnification and jurisdictional issues established therein. The authenticity of this document may be verified at <http://www.sgs.com/en/certified-clients-and-products/certified-client-directory>. Any unauthorized alteration, forgery or falsification of the content or appearance of this document is unlawful and offenders may be prosecuted to the fullest extent of the law.

SGS

**MIM Software Inc. also trading as
MIM Software Brussels BVBA,
MIM Software Beijing Co., Ltd
and MIM Software**

**ISO 13485:2016
EN ISO 13485:2016**



Issue 14

Detailed scope

**The design, development, manufacturing, distribution, installation,
and service of medical imaging software used for diagnosis,
treatment evaluation, and treatment planning.**

Additional facilities

**MIM Software Beijing Co., Ltd, Suite 809, Shouxiang Science Building, No.51
Xueyuan Rd., Haidian District, Beijing, 100191, P.R.China**

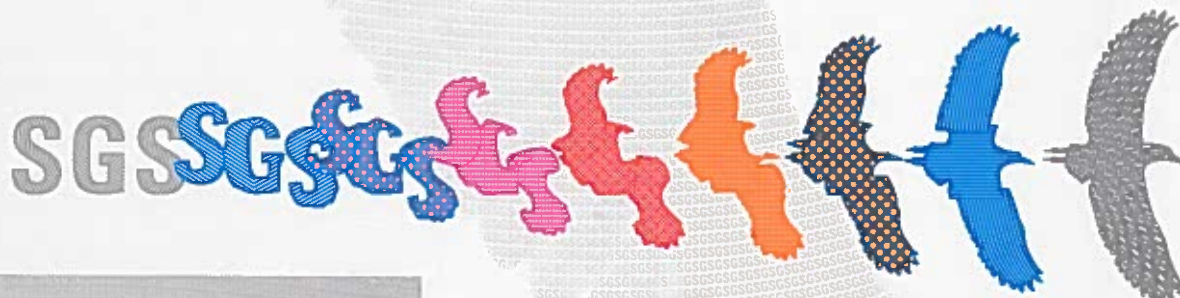
**MIM Software Beijing Co., Ltd, , Suite 2315, Shangpu International Office
Building, NO.6 Daye RD., Jinjiang District, Chengdu, 610020, P.R.China**

MIM Software, Houtparklaan 1 bus 21 , 3600 Genk, Belgium

MIM Software Brussels BVBA, Drukpersstraat 4, 1000 Brussel, Belgium



0005



This document is issued by the Company subject to its General Conditions of Certification Services accessible at www.sgs.com/terms_and_conditions.htm. Attention is drawn to the limitations of liability, indemnification and jurisdictional issues established therein. The authenticity of this document may be verified at <http://www.sgs.com/en/certified-cliente-and-products/certified-client-directory>. Any unauthorized alteration, forgery or falsification of the content or appearance of this document is unlawful and offenders may be prosecuted to the fullest extent of the law.